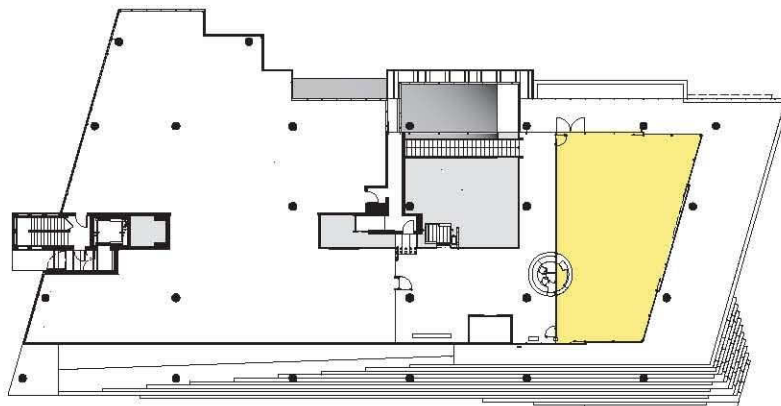


# The Anna Lindh Hall

Anna Lindh Hall is House of Sweden's most popular space. Its glass walls bring the outdoors inside, providing event-goers with spectacular views of both the Potomac River and Rock Creek. Its entrance is flanked by two ten-foot-high running waterfalls – a great photo backdrop! Four sliding glass doors open up directly onto House of Sweden's stone terrace.



## Meeting Capacities

Room	Dimension (ft)	Size (sq.ft.)	Size (sq.m)	Ht. ft.	Capacities Banquet	Theater	Reception
The Anna Lindh Hall	32x57	1840	171	10'-0"	100 pers	100 pers	100 pers

Example of exhibition layout  
- see opposite page for conference layouts

